

Services for grieving children in the UK and the work of the Childhood Bereavement Network

Alison Penny

11 May 2022

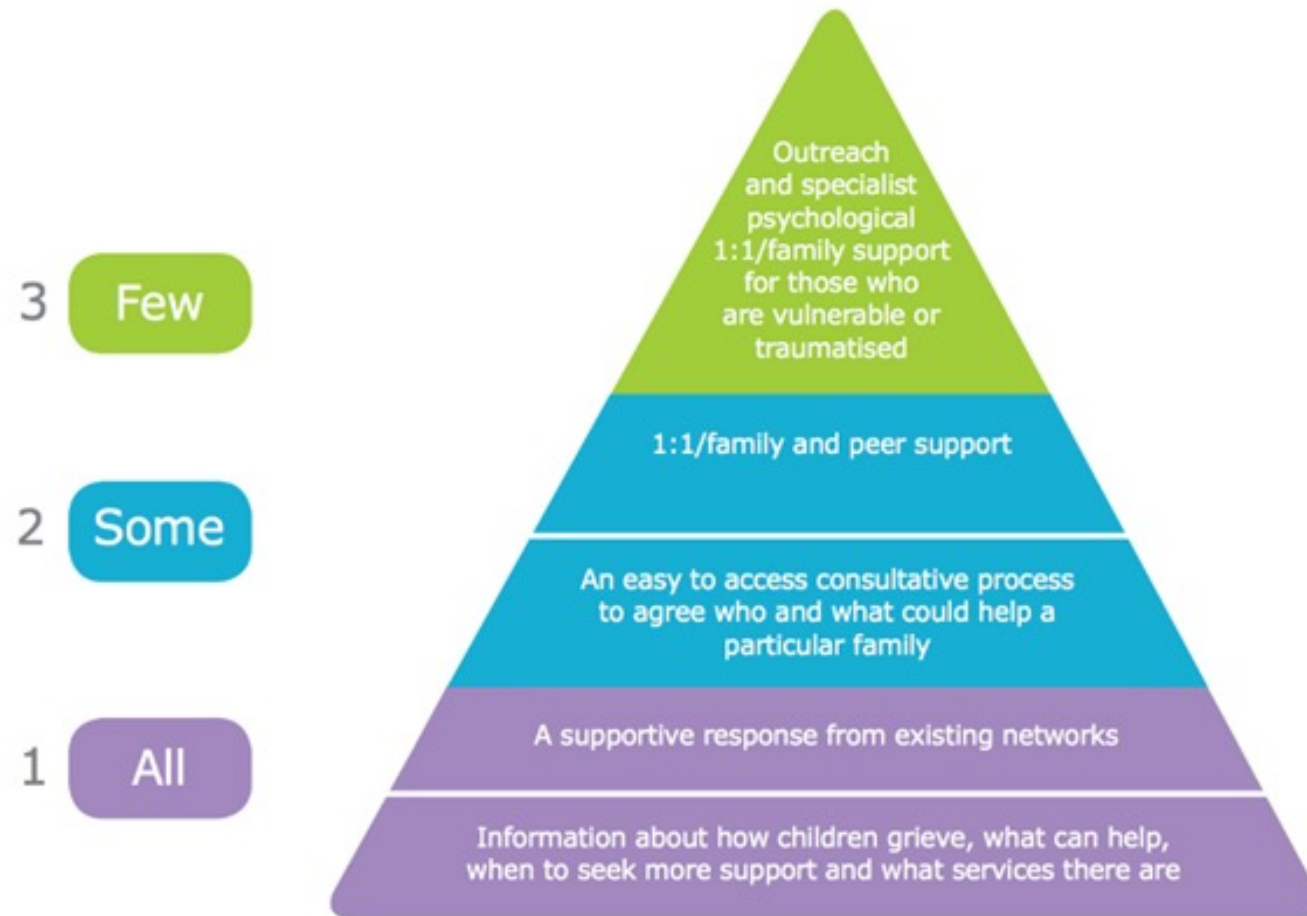
Outline

- Context
- How services have developed for children in the UK
- How the Childhood Bereavement Network supports these services and grieving families

The context of services

- Range of agencies working in partnership with families
- Schools, children's centres, nurseries, Child and Adolescent Mental Health Services, GPs, hospitals, hospices, palliative care teams, young people's counselling services
- Specialist child bereavement services

What good support looks like



Also:

- Basic needs (physiological, safety)
- Rituals and a chance to say goodbye
- A society that talks about grief

What stimulates service development?

- Professional experience – especially the hospice movement
- Changing ideas about childhood and bereavement
- Knowledge from research of children and parents' experiences
- Pioneer services
- Demand from parents and children
- Closure or contraction of other services

What services 'look' like

- Rolls and Payne 2003
- 14% working solely with bereaved children, majority embedded in wider host
- 73% using a mix of paid staff and volunteers
- Staff come from a range of professional backgrounds
- Services provide a range of interventions
 - Child or child+family
 - Individuals or groups
 - Ancillary services
- 71% open access

- CBN estimate - 69% of LAs covered

What CBN does and how we can support

- Signposting
- Advocacy
- Support for professionals
- Generating new approaches

Signposting – helping families find the services they need



About ▾

Families & communities ▾

Sector support ▾

Get involved ▾

Training and events ▾

[Donate](#) [Members](#) [Shop](#) [🔍](#)

Finding support local to you

Services supporting bereaved children

The map displays numerous red location pins across the United Kingdom and Ireland, indicating the presence of bereavement support services. The map includes standard navigation controls like zoom in (+), zoom out (-), and a search bar. Labels for countries and cities are visible, such as Ireland, United Kingdom, Denmark, Netherlands, Belgium, Luxembourg, Germany, and France.

[View map in full screen](#)

Families & communities

[Finding support local to you](#)

▾ [Finding support local to you](#)

> [National support services](#)

[For families](#)

[For schools](#)

[For friends](#)

SHARE



Advocacy – influencing national policy in the interests of bereaved children

- The outcomes we want to see are that children
 - Are prepared for a death
 - Have enough income
 - Get support from family, friends and the community
 - Get support at school and beyond
 - Get extra support from services if they need it
- We work towards these outcomes by
 - Practive campaigning
 - Respdning to policy consultations
 - Amplyoginy out members' campaigns



Support for professionals

- Community of practice
- Webinars
- Email bulletin
- Resources (films, postcards)
- Enquiries



Supporting service development

- *Guide to developing good practice*
- Factsheets
- Childhood bereavement – what do we know in 2019?

Generating new approaches

- Outcome evaluation
- Support for specific groups (eg children in kinship care, refugees)
- Growing in Grief Awareness programme
<https://childhoodbereavementnetwork.org.uk/if-you-need-help-around-death/schools/growing-grief-awareness>
- UK Commission on Bereavement
<https://bereavementcommission.org.uk/taking-part/children-and-young-peoples-voices/>



How to join

- Visit www.childhoodbereavementnetwork.org.uk
- Email cbn@ncb.org.uk or phone 020 7843 6309
- Annual subscription
 - £90 large organisations (>£50k annual budget)
 - £50 small organisations
 - £20 individuals