

NIGHTINGALE & ANTIMICROBIAL STEWARDSHIP: THE DRIVE FOR PATIENT SAFETY AND QUALITY CARE

HOPE CONFERENCE
RITA DRUMMOND OLANS

OCTOBER 21, 2020



TODAY'S FOCUS

Florence Nightingale as a person ahead of her time

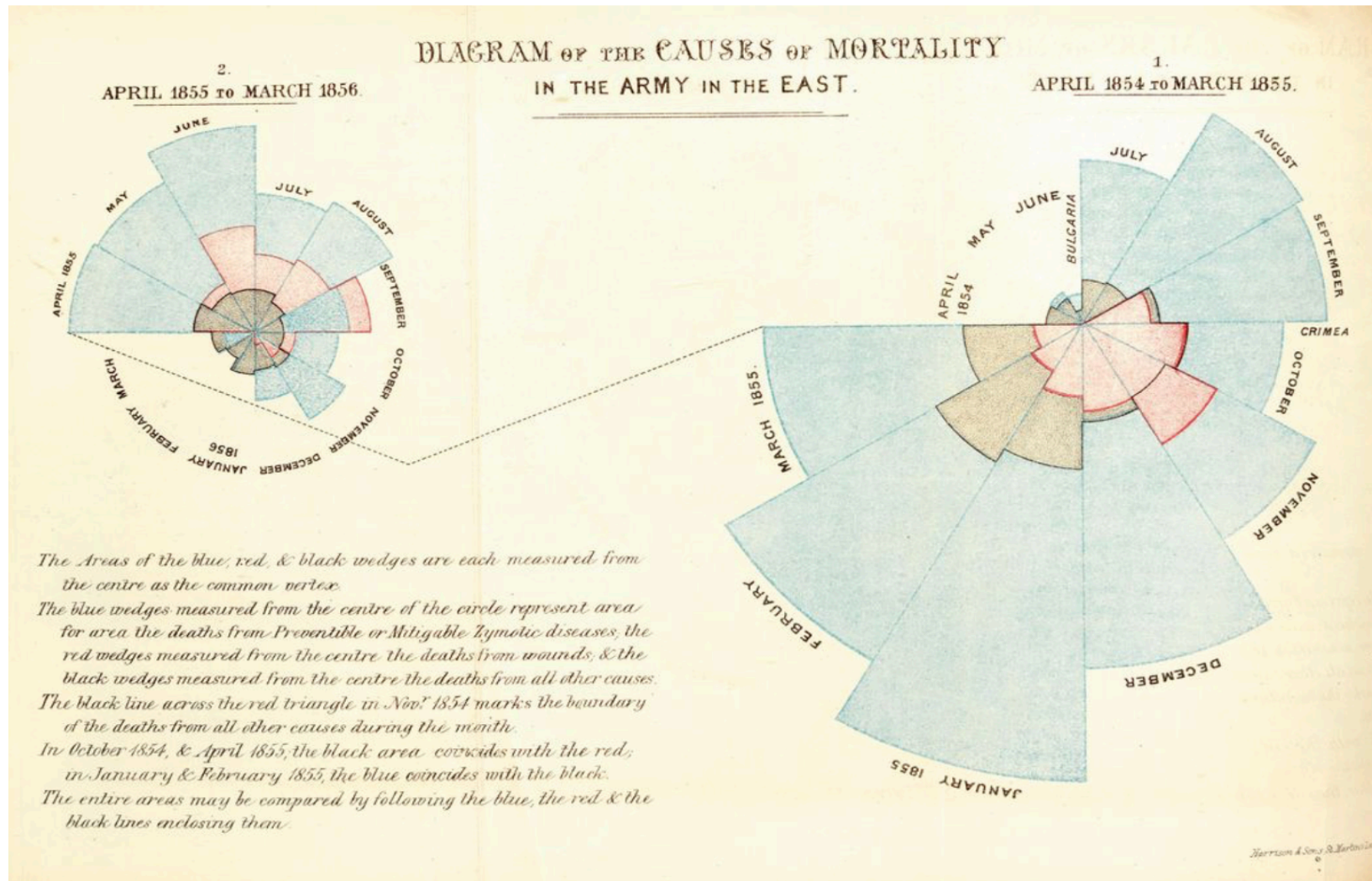
Discuss how antimicrobial stewardship programs are designed

Bring together the wisdom of Nightingale with today's efforts to achieve these same goals



THE YEAR OF THE NURSE AND MIDWIFE- 2020





NIGHTINGALE ROSE DIAGRAM

Nightingale became the first female member of the Royal Statistical Society

She was named an honorary member of the American Statistical Association

Nightingale's pioneering graph documented a stunning reality: Disease, shown in blue wedges—not battlefield wounds or other causes—claimed the vast majority of British soldiers' lives in Crimea.
(Courtesy of London Sotheby's)



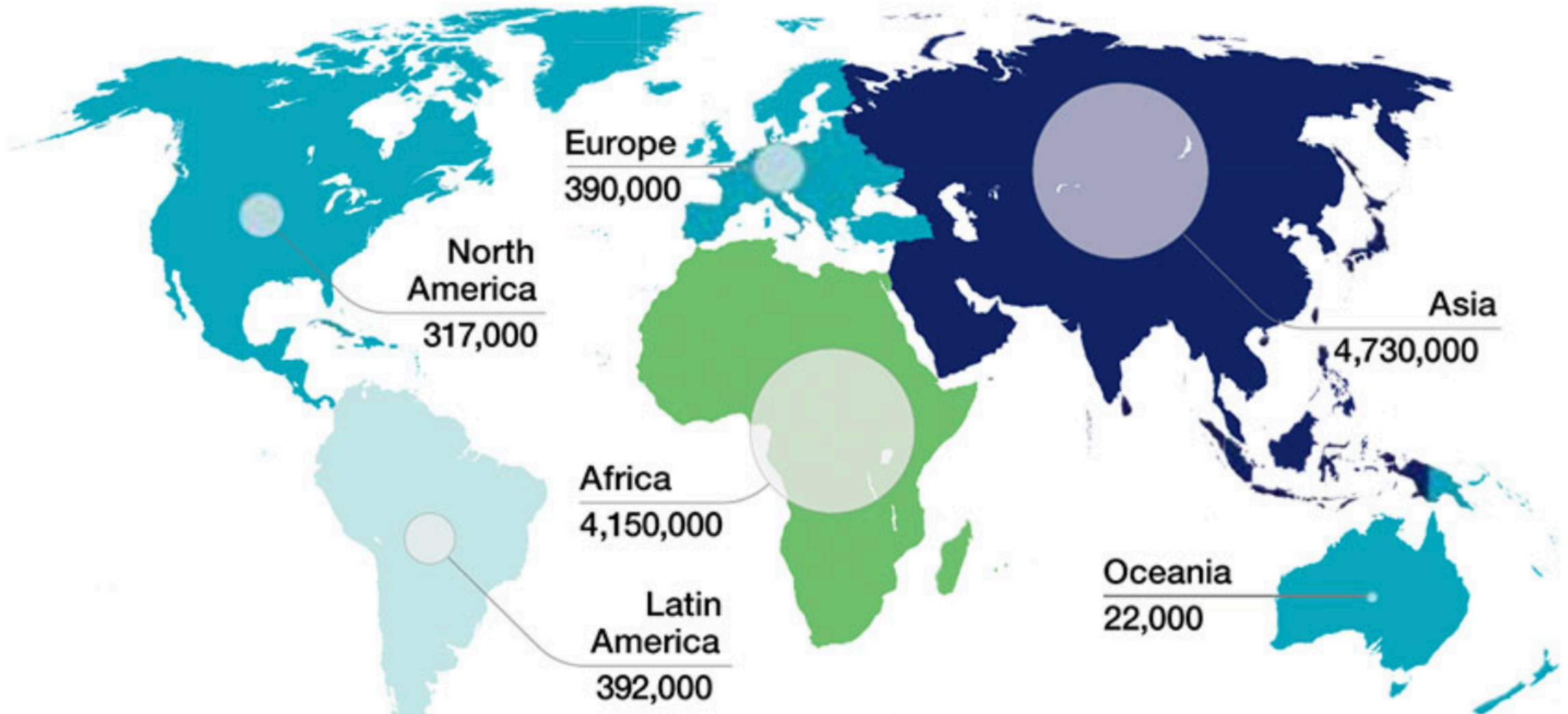




**NOW
SHIFT GEARS->
FAST FORWARD
TO THE 21ST
CENTURY**

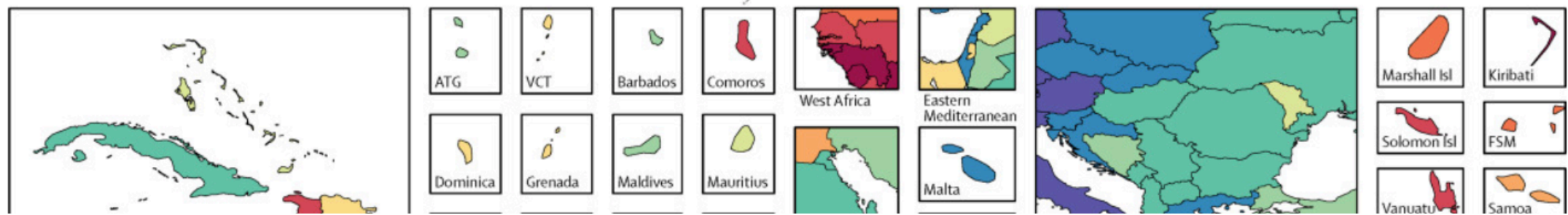
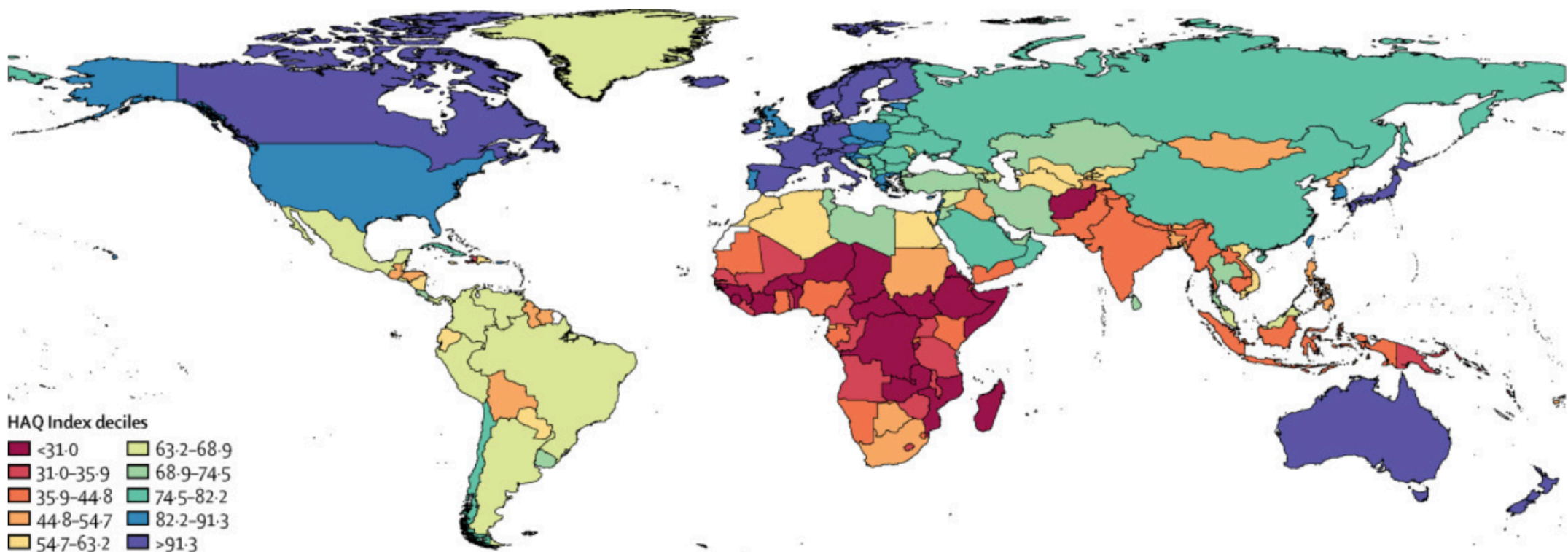
Antimicrobial stewardship is a coordinated program that promotes the appropriate use of **antimicrobials** (including antibiotics), improves patient outcomes, reduces microbial resistance, and decreases the spread of infections caused by multidrug-resistant organisms.

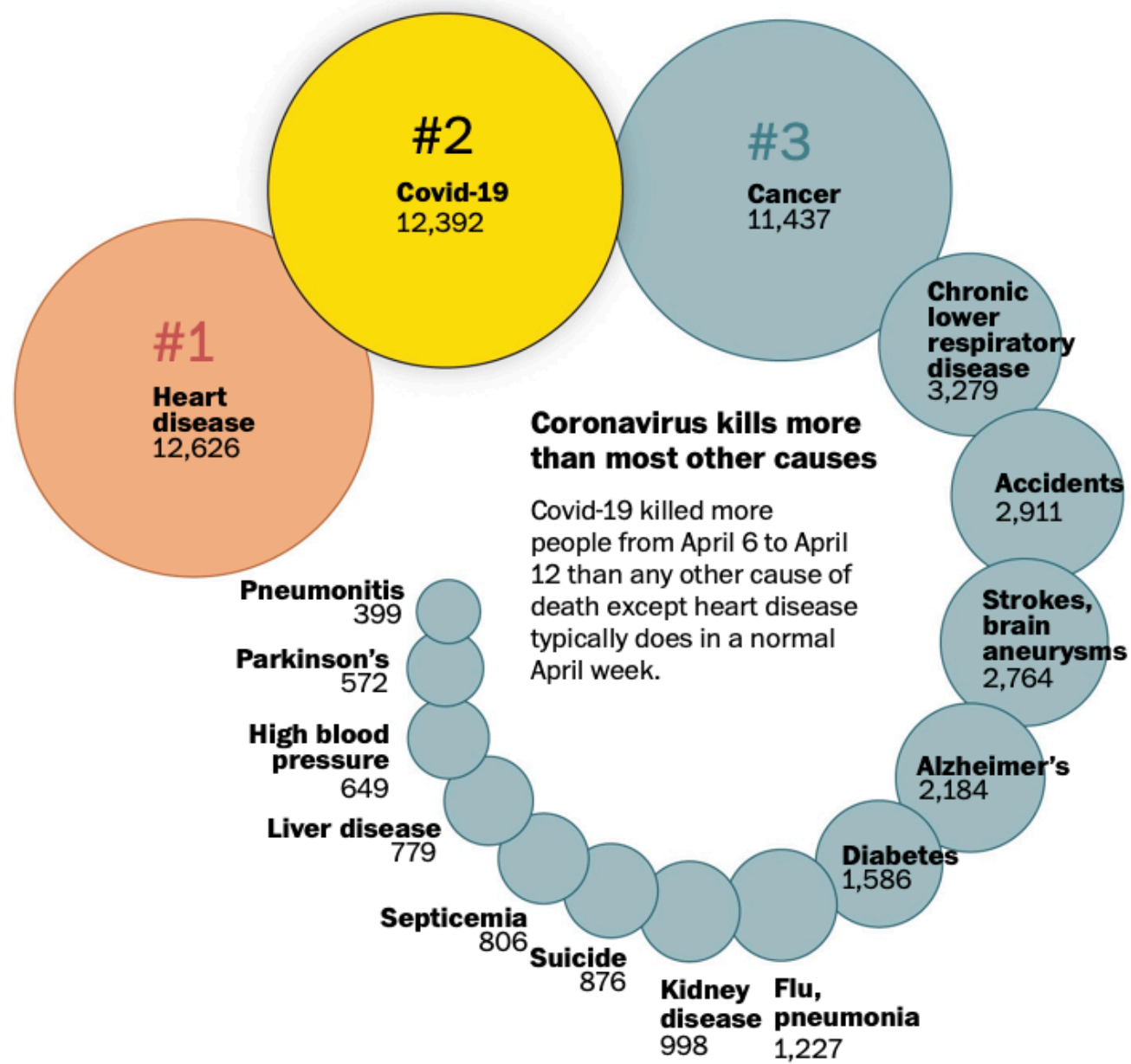
Deaths attributable to AMR every year by 2050



Man Made or Natural Disaster



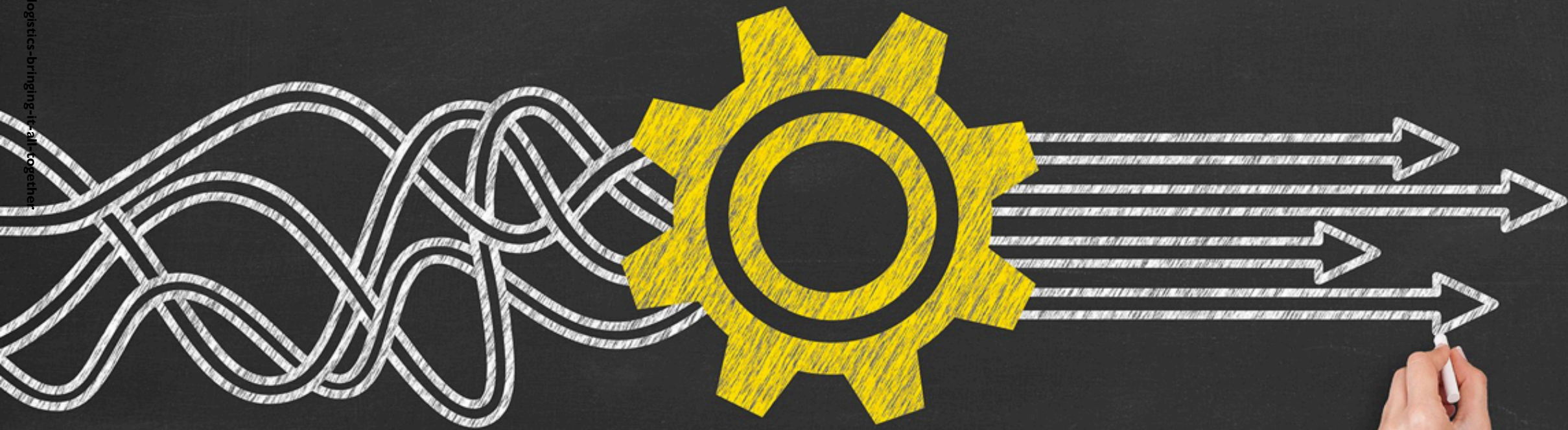






CDC's seven core elements of antimicrobial stewardship

CDC. (2020) Nursing homes and assisted living (Long-term care facilities [LTCFs]).



LEADERSHIP

DEMONSTRATES SUPPORT AND COMMITMENT TO
SAFE AND APPROPRIATE ANTIBIOTIC USE

ACCOUNTABILITY

Identify physician, nursing and pharmacy leads responsible for promoting and overseeing antibiotic stewardship activities in your facility

DRUG EXPERTISE

Establish access to consultant pharmacists or other individuals with experience or training in antibiotic stewardship for your facility

ACTION

Implement at least one policy or practice to improve antibiotic use

TRACKING

Monitor at least one process measure of antibiotic use and at least one outcome from antibiotic use in your facility

REPORTING

Provide regular feedback on antibiotic use and resistance to prescribing clinicians, nursing staff and other relevant staff

EDUCATION

Provide resources to clinicians, nursing staff, residents and families about antibiotic resistance and opportunities for improving antibiotic use



Florence Nightingale

THE ENDURING LEGACY OF FLORENCE NIGHTINGALE

- Compassion - Lady with the Lamp
- Collaboration - administrator
- Communication - advocate
- Critical thinking – statistician and educator

REFERENCES

Association for Professionals in Infection Control and Epidemiology [APIC]. (2020). Retrieved from: <https://apic.org/professional-practice/practice-resources/antimicrobial-stewardship>

Centers for Disease Control and Prevention [CDC]. (2020) Nursing homes and assisted living (Long-term care facilities [LTCFs]). Retrieved from: <https://www.cdc.gov/longtermcare/prevention/antibiotic-stewardship.html>

Keating, D. & Estaban, C. (April 16, 2020). Covid-19 is rapidly becoming America's leading cause of death. *The Washington Post*, Retrieved from: <https://www.washingtonpost.com/outlook/2020/04/16/coronavirus-leading-cause-death/?arc404=true>

GBD 2016 Healthcare Access and Quality Collaborators. (2018). Measuring performance on the healthcare access and quality index for 195 countries and territories and selected subnational locations: A systematic analysis of burden of disease study 2016. *The Lancet*, 391(10136), 2236-2271. DOI: [https://doi.org/10.1016/S0140-6736\(18\)30994-2](https://doi.org/10.1016/S0140-6736(18)30994-2)

Hammer, J. (2020). The defiance of Florence Nightingale. *Smithsonian Magazine*, 50(10), 24-33, 78-9.

Haber, C. (2019). World Vision. Retrieved from: <https://www.worldvision.org/disaster-relief-news-stories/worst-disasters-2019>

Bishop, M. (2017). Public Health Post. Retrieved from: <https://www.publichealthpost.org/databyte/antibiotic-resistant-bacteria/>

Wellcome Collection (n.d.) Retrieved from: <https://wellcomecollection.org/works/agecppb9/items?canvas=1&langCode=eng>

